



IMPORTANT ELECTRICAL SAFETY

The sign is 12V DC only. Do not connect the sign wires directly to 110V AC. Connect AC power only to a suitable 12V DC power supply. If AC wiring is required, ask a qualified electrician to complete that part. Keep the distance between the sign and the 12V DC power supply within 6 ft.

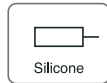
BEFORE YOU START

- ✓ Dry-fit the sign on the wall before using adhesive.
- ✓ Use the paper template to confirm position and spacing.
- ✓ Turn off power before connecting any wires.
- ✓ Test the sign with the 12V DC power supply before final mounting.

WHAT IS INCLUDED

- ✓ Backlit sign with low-voltage leads.
- ✓ Paper mounting template.
- ✓ M4 threaded studs and plastic wall anchors.
- ✓ Painter's tape for temporary holding while adhesive cures.

TOOLS & MATERIALS YOU MAY NEED



Clear silicone / glass adhesive is not included. Use outdoor-rated adhesive when installing outdoors.

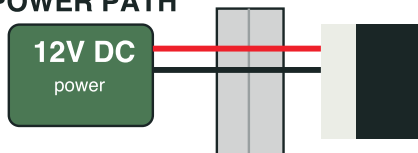
INSTALLATION NOTES

- ✓ Drill 3/16 in holes for the mounting studs.
- ✓ Drill a 1/4 in hole for the low-voltage wire.
- ✓ Apply a continuous bead of clear silicone around the back contact area.
- ✓ Use painter's tape to hold the sign in place until the adhesive cures.

WIRING NOTES

- ✓ Follow the polarity labels on your order, not wire color alone.
- ✓ Keep the sign within 6 ft of the 12V DC power supply.
- ✓ For multiple letters or numbers, connect all positives together and all negatives together.
- ✓ Use the power supply according to its label: IP20 is for indoor dry locations; IP67 is weather-resistant.
- ✓ Keep the power supply accessible. Do not seal it inside the wall.
- ✓ Keep all wire connections protected from water.

POWER PATH



110V AC input stays at the power supply. Only 12V DC low-voltage wires go to the sign.

AFTER MOUNTING

- ✓ Leave painter's tape in place for about 24 hours, or follow the adhesive cure time.
- ✓ Remove tape slowly after the adhesive has cured.
- ✓ Turn on power and check for an even backlit glow.

QUICK TROUBLESHOOTING

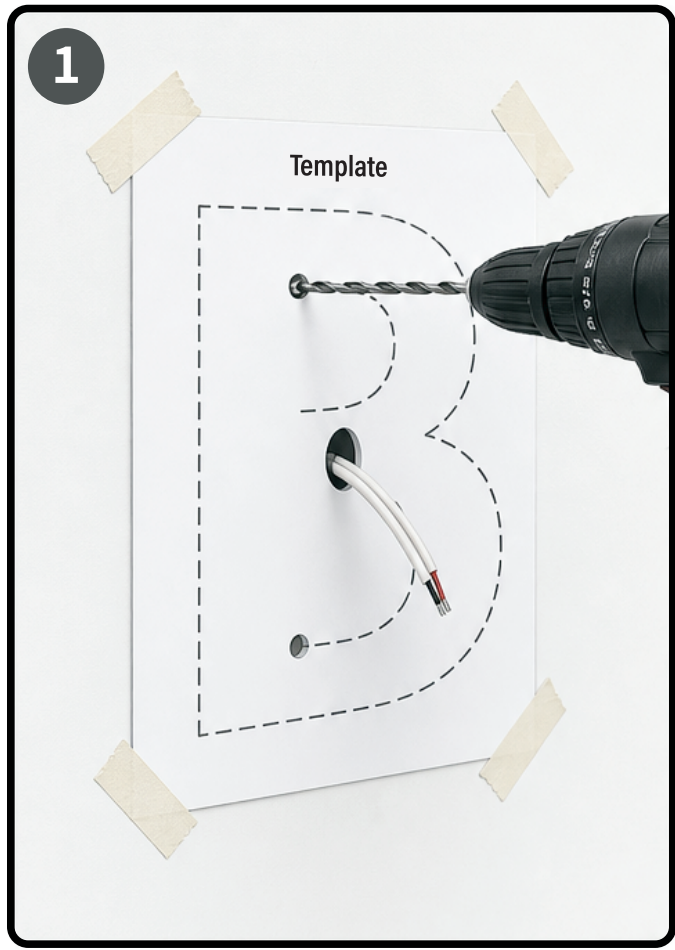
- ✓ No light: check 12V DC output and polarity.
- ✓ One part does not light: check that letter's wire connection.
- ✓ Weak light: confirm power supply wattage is sufficient.
- ✓ Loose sign: support with tape and allow adhesive to fully cure.

Need help?

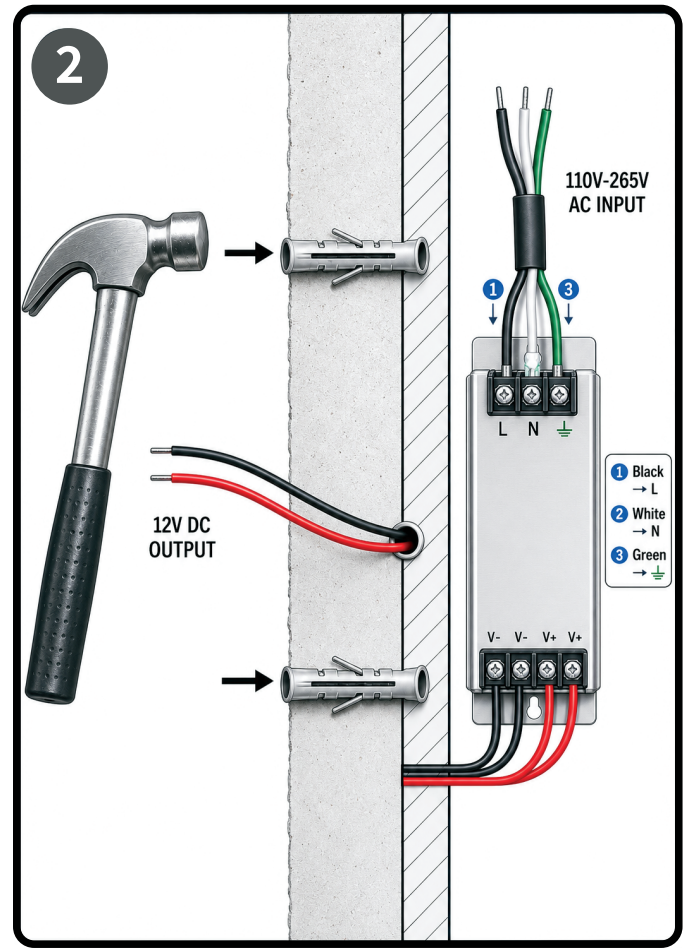
Email photos of the wall, wiring, power supply label, and your order number to:

dylan@nervesign.com

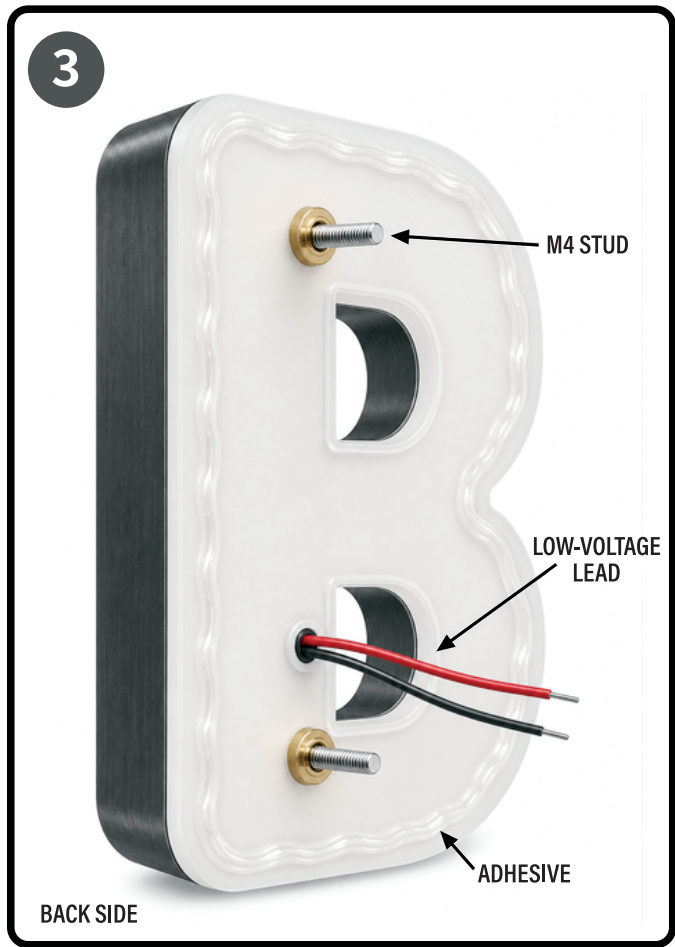
Step 1 MARK & DRILL



Step 2 INSERT ANCHORS & WIRE POWER



Step 3 PREPARE SIGN



Step 4 CONNECT THE WIRES & FIX

